



General Project Atlas

Glassboro-Camden Line EIS
May 20, 2013

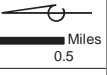
Prepared by:
STV Incorporated 

Glassboro-Camden Line
General Project Atlas

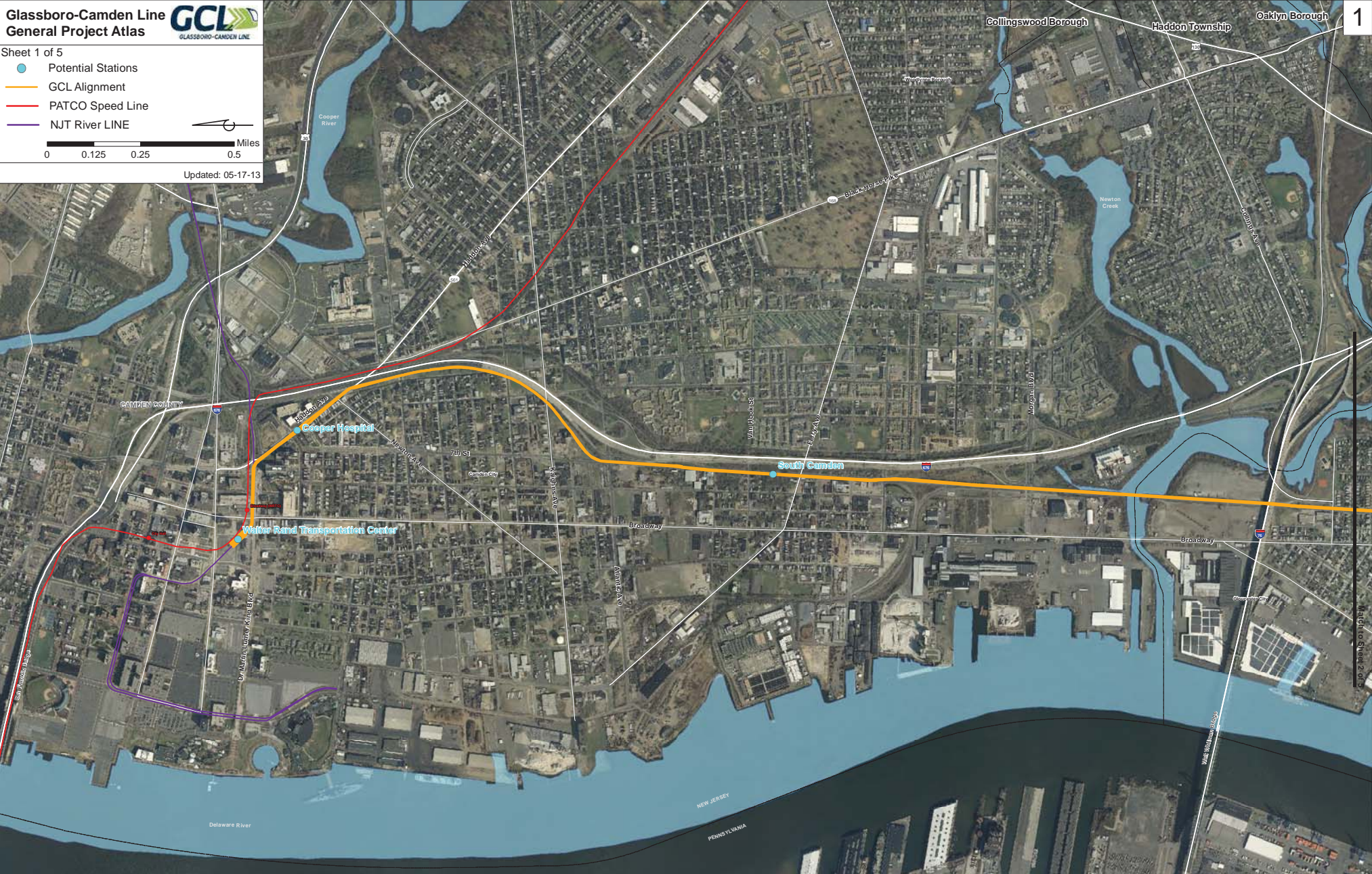


Sheet 1 of 5

- Potential Stations
- GCL Alignment
- PATCO Speed Line
- NJT River LINE



Updated: 05-17-13



Match to Sheet 2 of 5

Glassboro-Camden Line
General Project Atlas

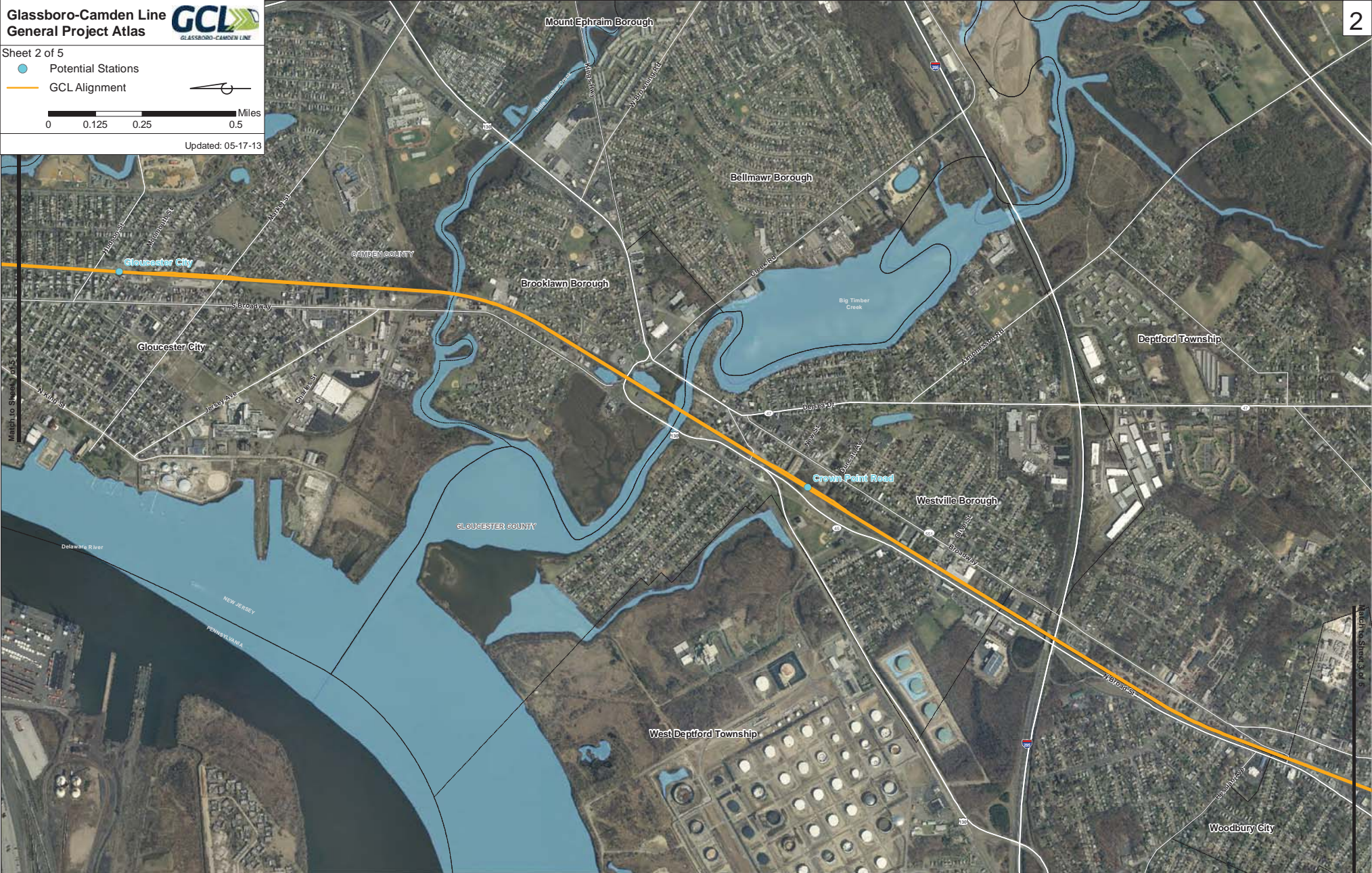


Sheet 2 of 5

- Potential Stations
- GCL Alignment

0 0.125 0.25 0.5 Miles

Updated: 05-17-13



Match to Sheet 1 of 5

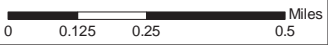
Match to Sheet 3 of 5

Glassboro-Camden Line
General Project Atlas

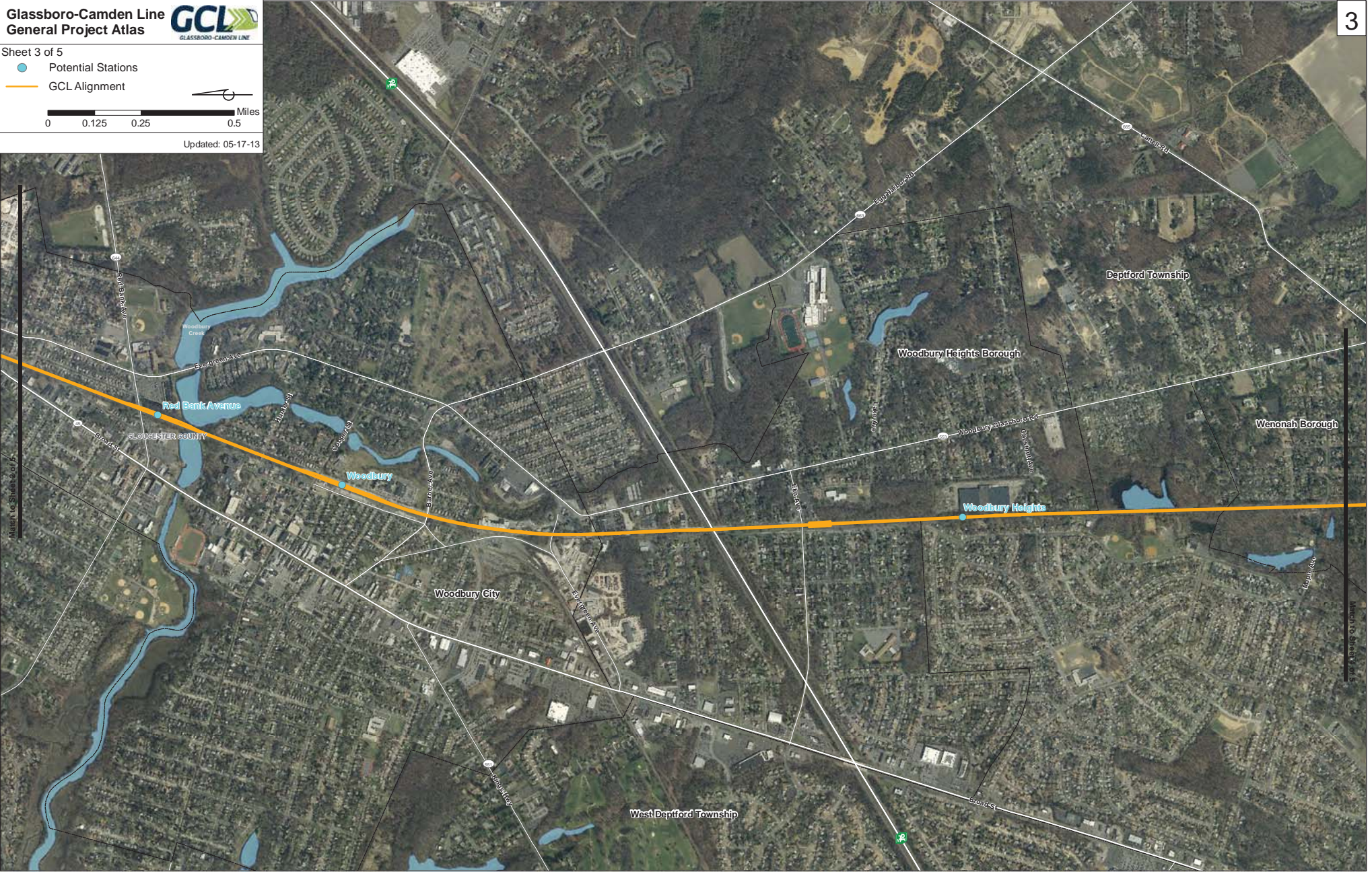


Sheet 3 of 5

- Potential Stations
- GCL Alignment



Updated: 05-17-13

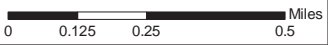


Glassboro-Camden Line
General Project Atlas

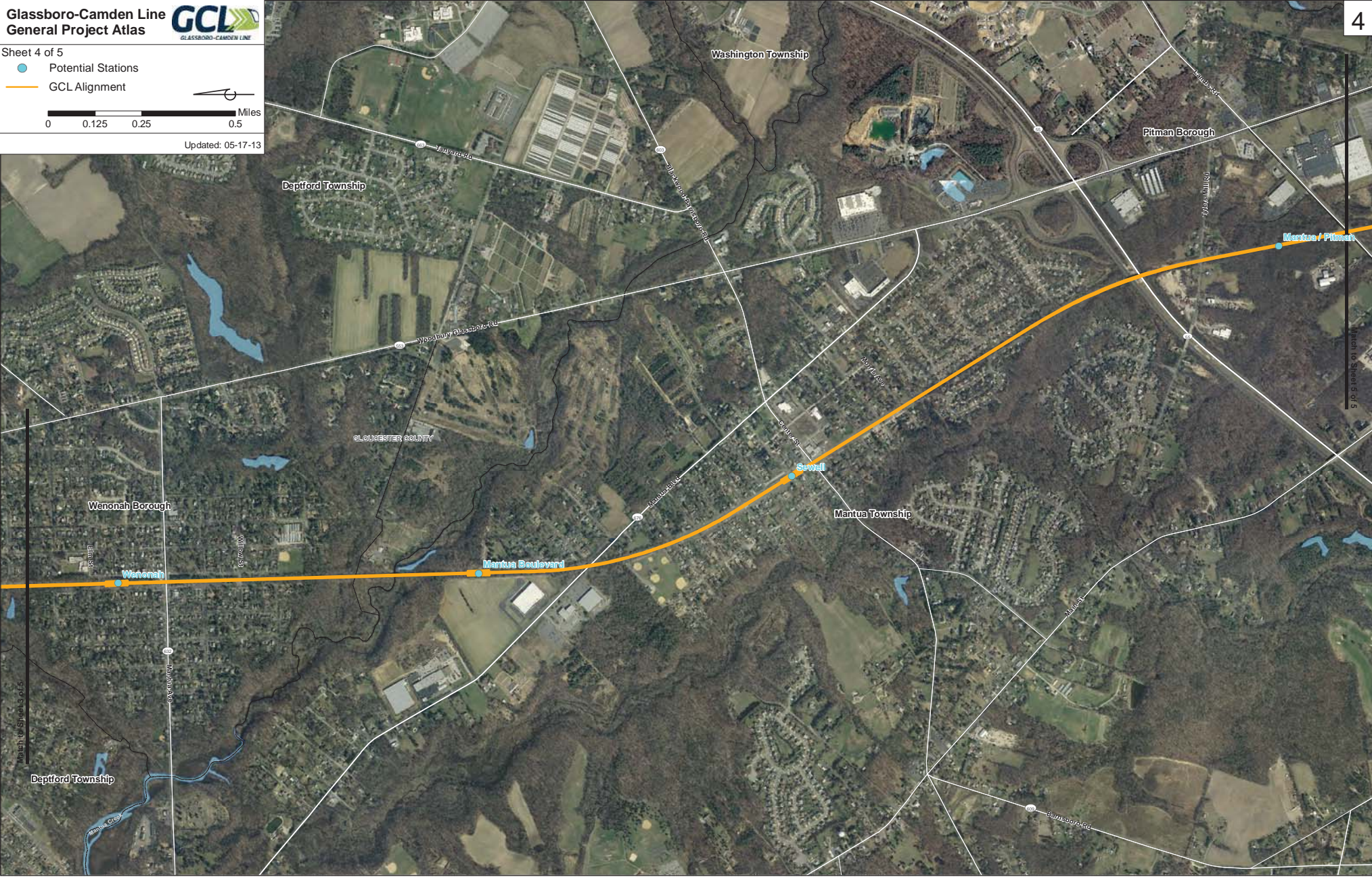


Sheet 4 of 5

- Potential Stations
- GCL Alignment



Updated: 05-17-13



Match to Sheet 3 of 5

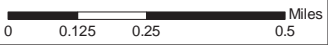
Match to Sheet 5 of 5

Glassboro-Camden Line
General Project Atlas

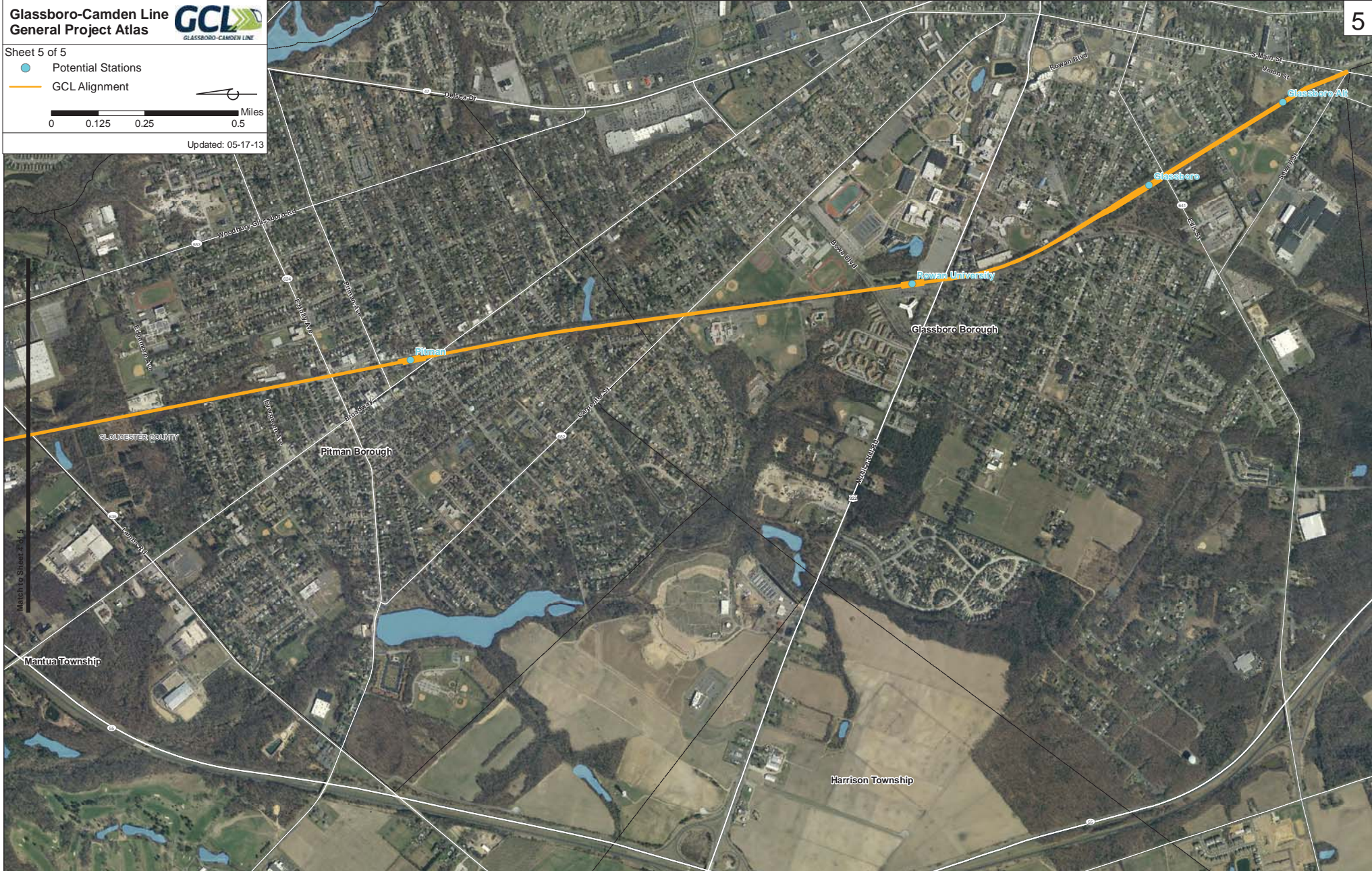


Sheet 5 of 5

- Potential Stations
- GCL Alignment



Updated: 05-17-13



Match to Sheet 2 of 5